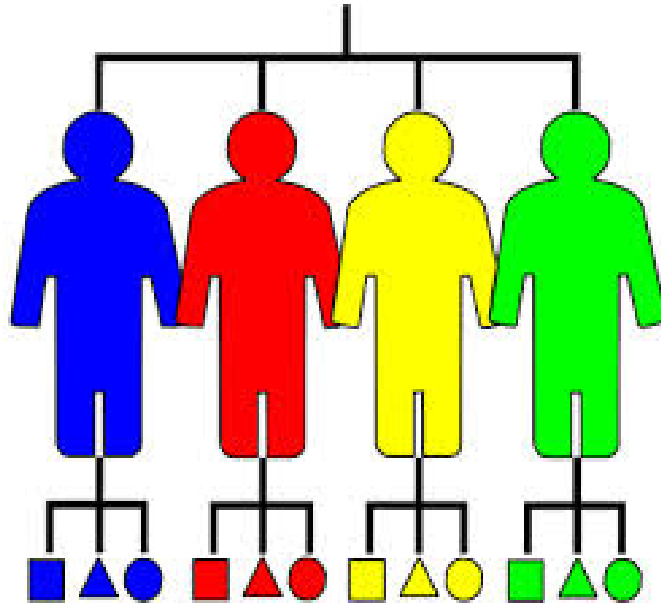


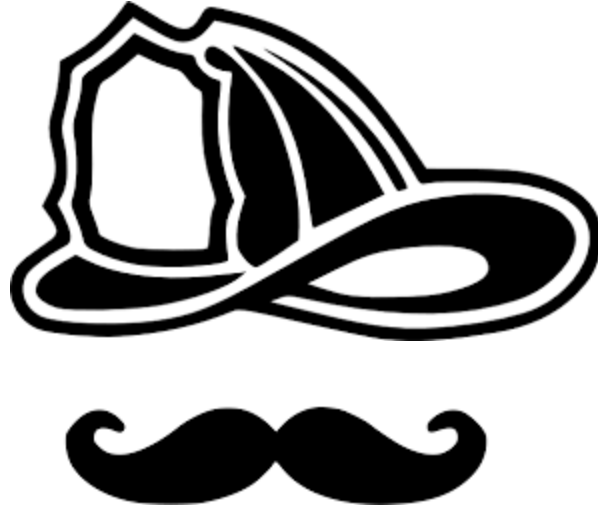
# Incident Management

Cause Stuff Happens!



# Incident Management

John Erichsen



# Question?



# Why Is New Jersey Called The Garden State?



**Because they couldn't fit  
“Petrol Chemical Refinery State”  
on the License Plate**



# Incident Management So What Is It??

It's

THE  
PLAN

# Incident Management

Command



Control

Coordination

ICS  
Toolbox



# It May Be A Series of Plans

SOLUTION

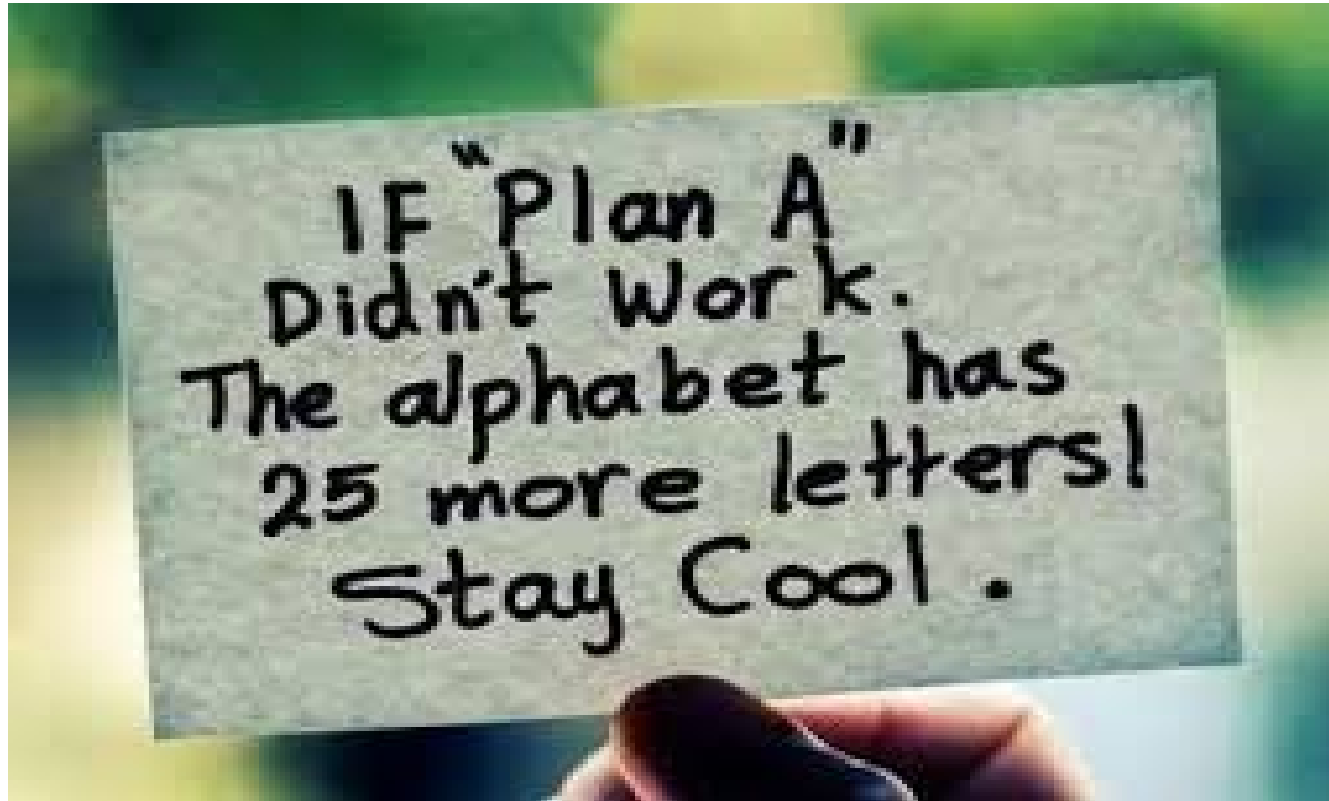


CRISIS





# And Just Remember!



# Incident Management

## So What Is It??

Its an organizational response system



INCIDENT COMMAND SYSTEM: COMMAND STAFF & GENERAL STAFF

# Incident Management



# Its Incident Action Plans



# Its Emergency Action Plans



# Its a Non-Emergent Plan for Maintenance



# Its An Emergency Management Tool

## OIL & GAS Emergency Management



### The Emergency Preparedness Plan (EPP)

#### Outlines the following:

##### Pre Incident Preparedness

- ➔ Development of Plans
- ➔ Training Requirements
- ➔ Exercise Requirements

##### Pre and Post Incident Mitigation

- ➔ Hazard Analysis/Risk Profile/Vulnerability Assessment
- ➔ Action Plan to Lower Identified Risks

##### Incident Response

- ➔ Emergency and Non-Emergency Actions
  - Medical, Fire, Hazmat Emergency Spills
- ➔ Those identified as a threat to Life and Property

##### Post Incident Recovery

- ➔ Return to Normal operations
- ➔ Repair, Replace, Clean-up Specific to the Incident

##### Sources, Standards and Requirements:

- Federal-State-Local Standards-Best Practices
- National Fire Protection Association Standards
- Occupational Safety and Health Association
- Environmental Protection Agency
- International Fire Code
- Federal Emergency Management Agency-CPG 101-201



For more information on emergency management in the City of Fort Collins, visit [fcgov.com/oem](http://fcgov.com/oem).

# Incident Management

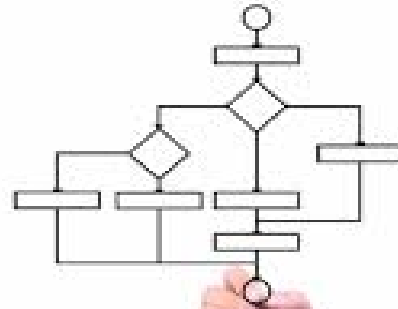
Is the activities of an organization to identify, analyze, and correct hazards to prevent a future re-occurrence.





# Incident Management

- It provides a structured organization to Respond, Manage, Mitigate and Remediate an Incident or Emergency.



# Incident Management

- These incidents within a structured organization are normally dealt with by either an Incident Response Teams (IRTs) or an Incident Management Team (IMT).



# Incident Management

- These Teams should be designated before hand and are placed in control of the organization whilst the incident is dealt with to restore normal functions.



# Emergency Medical Situations (Ambulance Services)



# Hazardous Material Spills



# Terrorist Attacks



# Natural Disasters: Sink hole –Floods – Wildfire – Tornado - Hurricane



# Man-made disasters: Train Derailments - Industrial Accidents



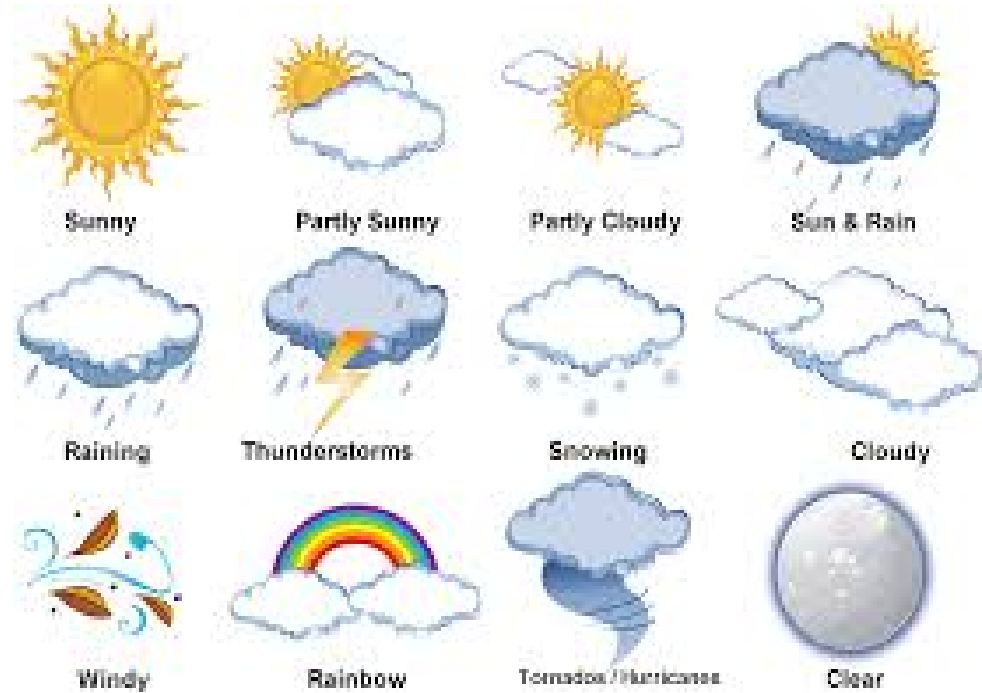


# Hostage Crisis





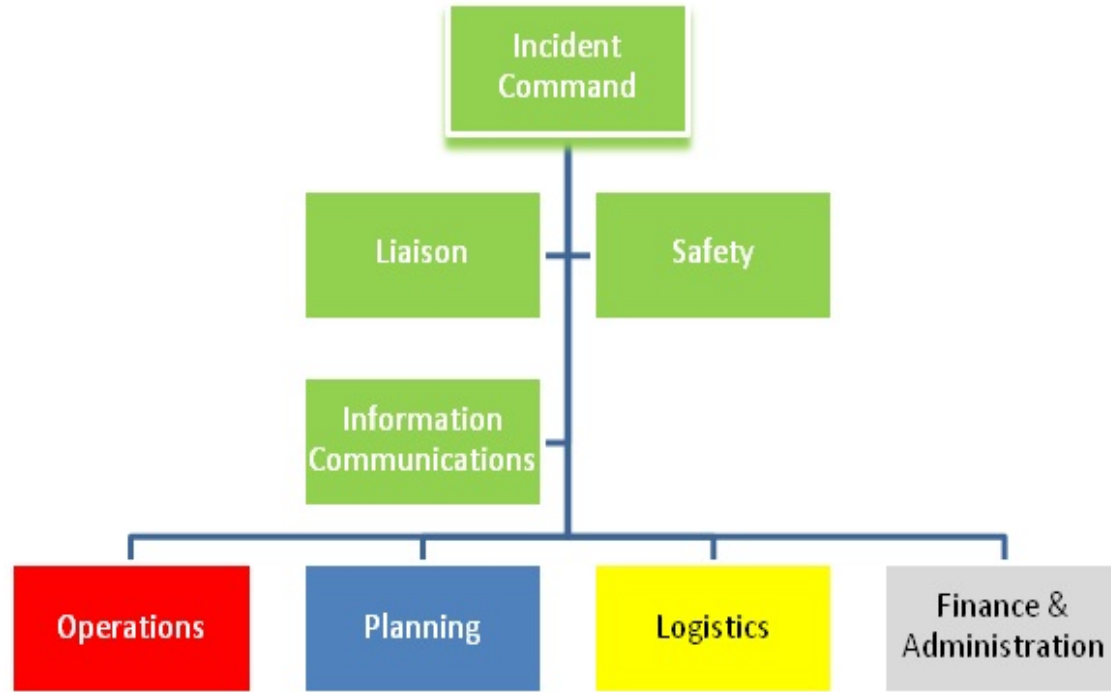
# Weather or Not



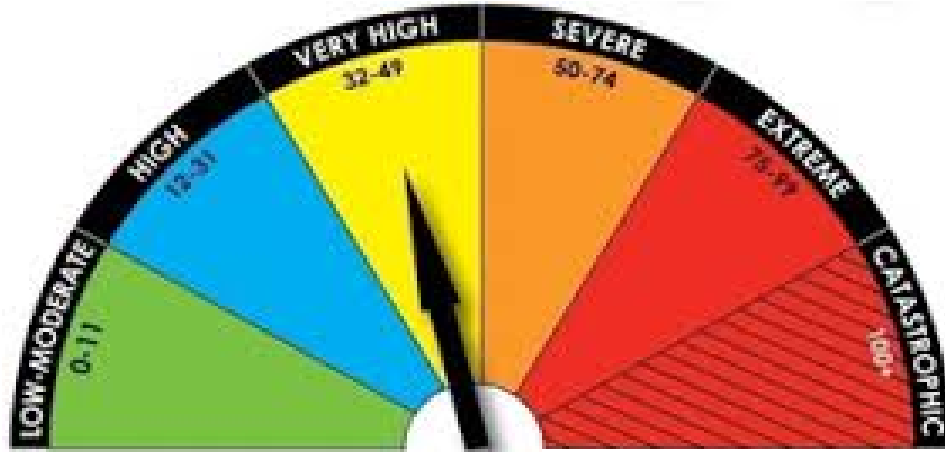
# Incident Management



# Incident Management System



# Gauge Your Incident



**DON'T PANIC**



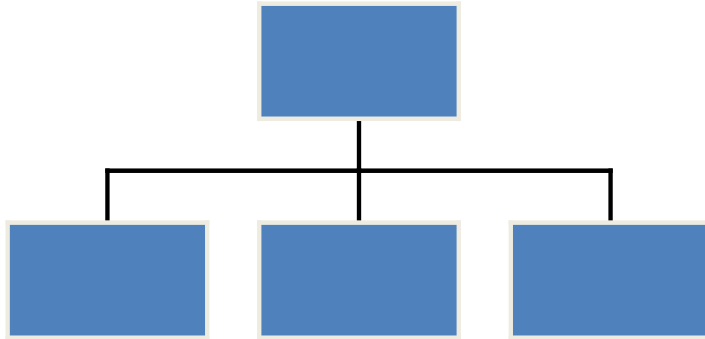
**PANIC  
BUTTON**

# How Big Can This Get?

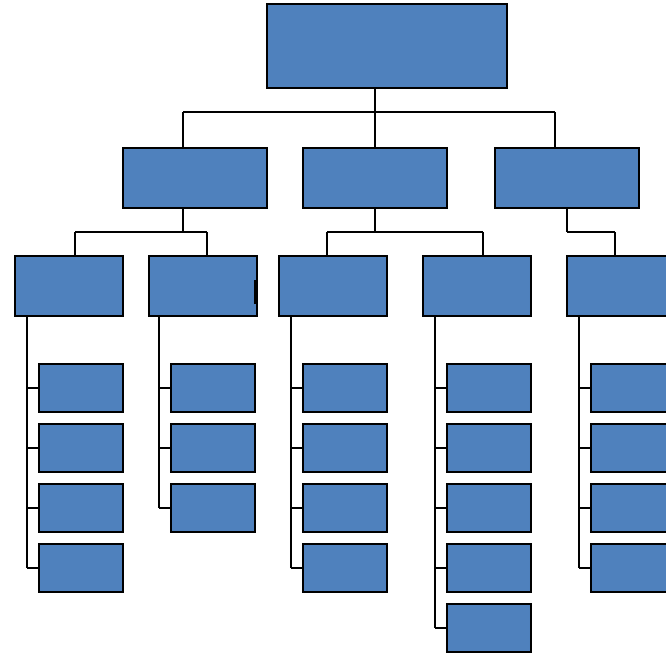


# MODULAR ORGANIZATION

## SIMPLE INCIDENT

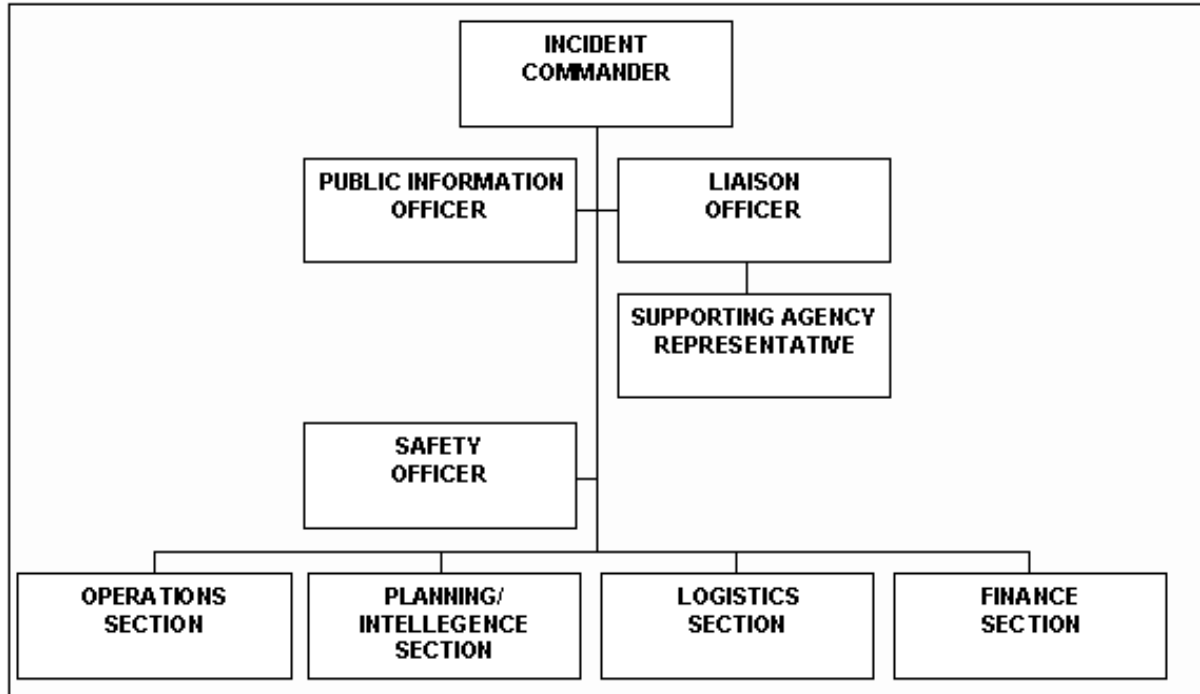


## COMPLEX INCIDENT





# ICS



# Incident Commander





# Incident Commander's Challenges



- **Isolate**
- **Identify Products**
- **Evaluate Hazards**
- **Coordinate info/resources**
- **Select Tools and Equipment**
- **Confine and Contain**
- **Decontaminate**
- **Terminate**



# ICS Priorities



**LIFE SAFETY**



**INCIDENT STABILIZATION/MITIGATION**



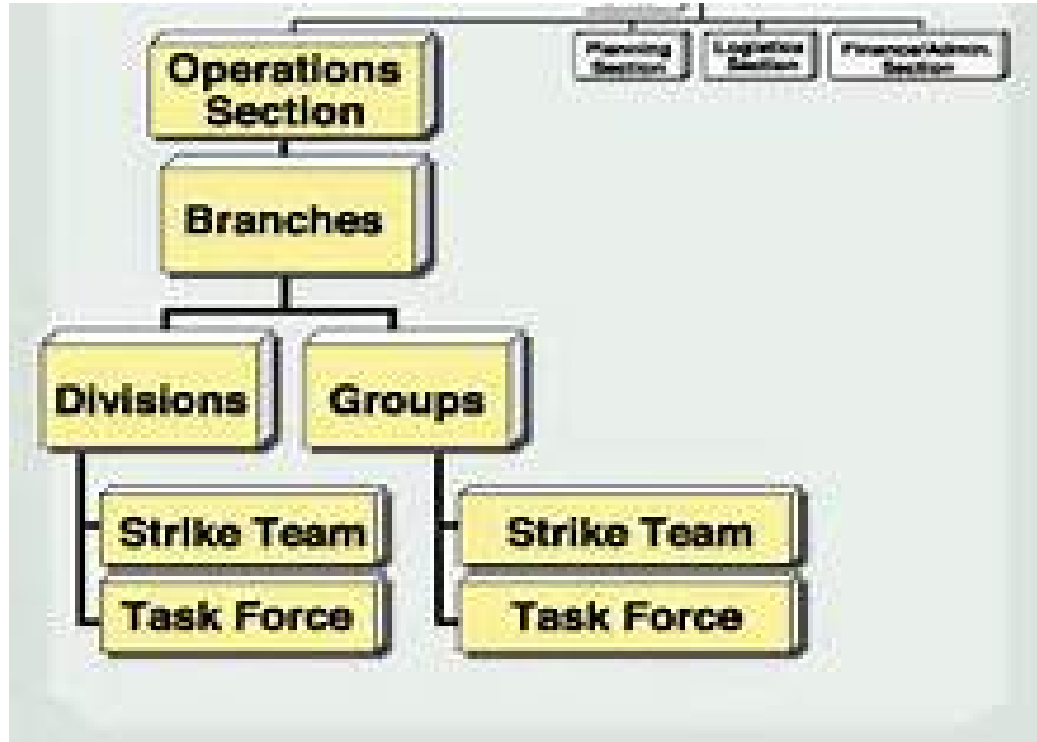
**ENVIRONMENTAL/PROPERTY CONSERVATION**

# Operations Officer

- The **Operations Section Chief** - (OPS), a member of the General Staff, is responsible for the management of all operations directly applicable to the primary mission.



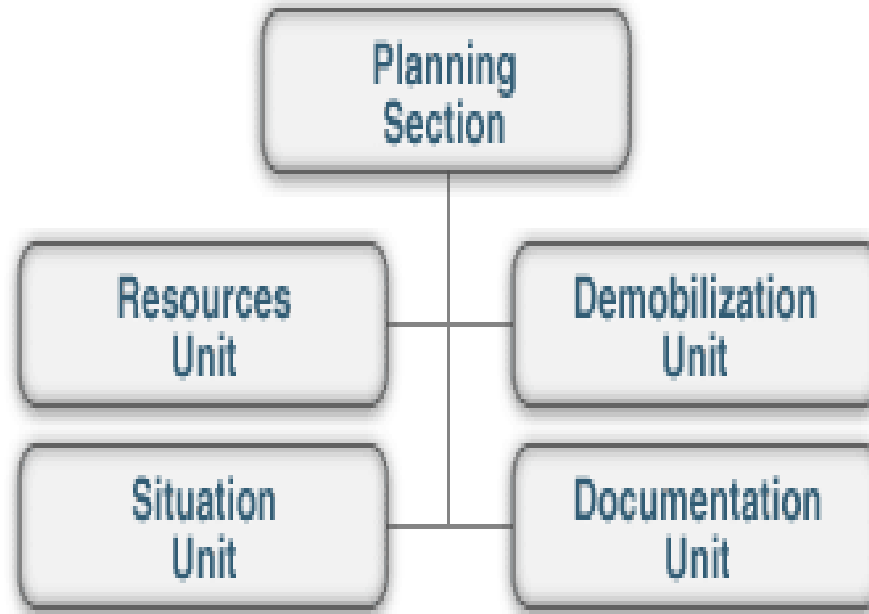
# Operations Officer



# Planning Section



# Planning Section

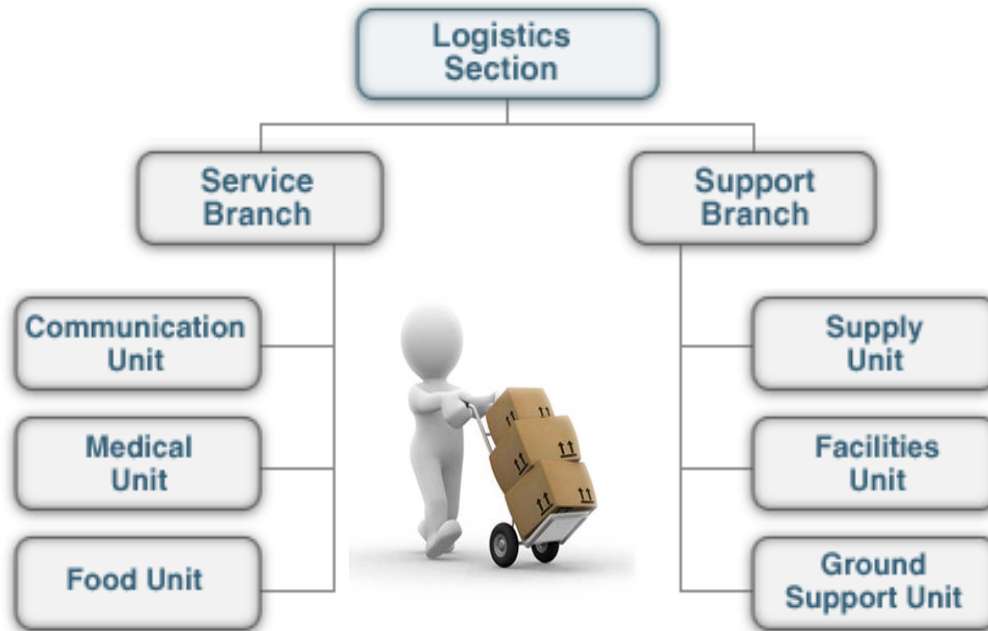




# Logistics Section



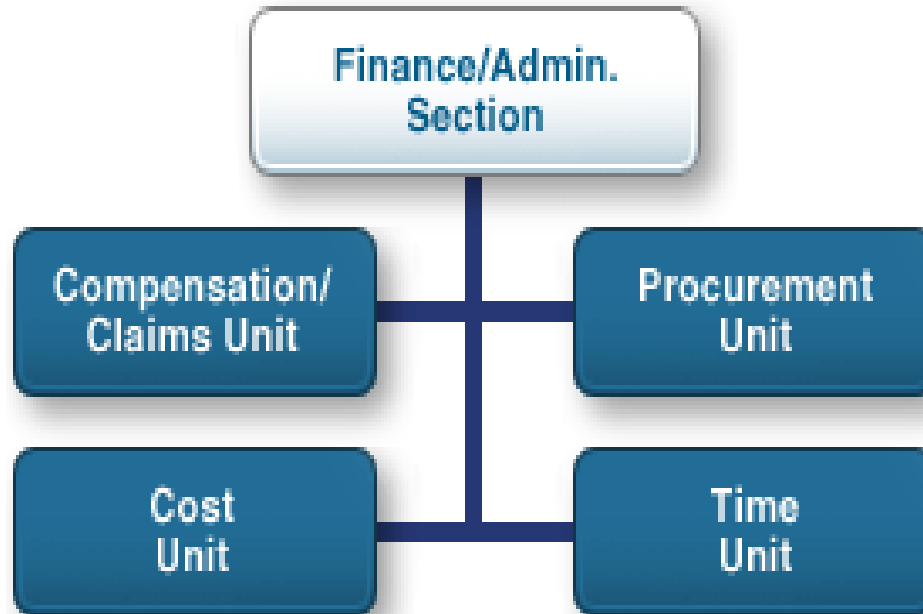
# Logistics Section



# Finance Section



# Finance Section



# Remember!

**HOPE**  
**»» IS NOT ««**  
**A METHOD**

NOTHING WAS EVER ACCOMPLISHED BY SIMPLY HOPING

# Incident Management

John Erichsen

